



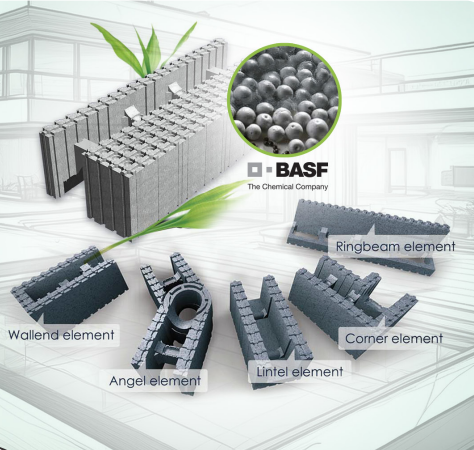
## THE COMPANY

## MISSION &amp; VALUES

We are a trusted and adaptable manufacturer, offering cost-effective solutions through one of the world's leading construction systems, delivering completely thermal bridge-free and energy-efficient buildings.

We cultivate a proactive culture built on transparency, innovation, and continuous improvement, establishing a strong foundation for success and growth for all stakeholders.

With a physical presence in Hungary/European Union and the United Arab Emirates, we are strategically positioned to deliver our products and services to the region.



## POSITION IN THE MARKET



## HEADQUARTERS

Budapest (Hungary), Abu Dhabi (UAE)

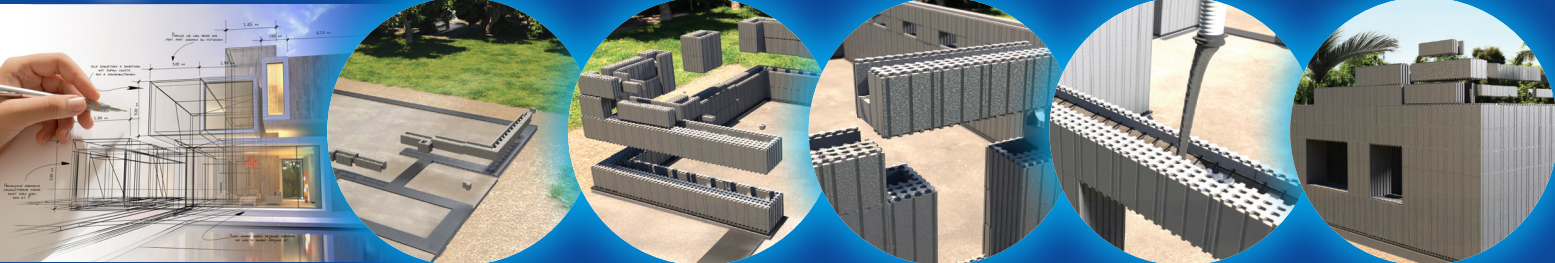
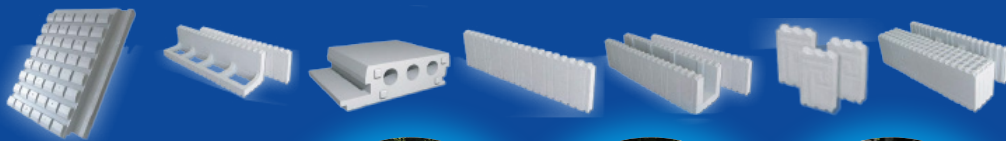
MORE THAN **20,000**  
BUILDINGS REALIZED IN THE LAST  
**30 YEARS** IN EUROPE:

England, Germany, France, Italy, Switzerland, Sweden, Spain, Poland, Austria, Czech Republic, Slovenia, Croatia, Romania, Bulgaria, Slovakia, Hungary.

## SCOPE OF ACTIVITY

## PROKONCEPT BUILDING SYSTEM

Construction of energy-savings and passive buildings, technical management, architect design.



The 25 cm thick masonry element is not only durable and stable but also an ideal choice for pool construction.

## LEADERSHIP TEAM



MR. ZSOLT VIGH  
CEO / OWNER

✉ vigh.zsolt@prokoncept.hu



MR. CSABA KOLLÁR  
Business Development Director

✉ csaba.kollar@popuae.com  
☎ +971 56 338 9027

## VALUES SHAPING OUR CORPORATE CULTURE



Competency



Transparency



Loyalty  
(long-term relationships)



Reliability



Compliance



Sustainability

Up to **70%** savings on construction time

at least **50%** less labor cost

Up to **70%** energy savings

**60-70%** less living cost

**100 years** of durability

## PRODUCTS &amp; SERVICES

Energia Unió Zrt. specializes in the production and distribution of stay-in-place, polystyrene-based insulation formwork elements (ICF) under the ProKoncept building system. The system's key feature is its simple construction; the technology enables building the structure and achieving perfect, thermal-bridge-free insulation in ONE STEP.

The technology developed in Germany and Hungary creates a robust construction system that combines a concrete structure, resistant to soil movement and floods, with Neopor's excellent insulation properties. The system's success lies in its ease of construction. ProKoncept technology allows for simultaneous structure building and flawless, thermal bridge-free insulation in a single step resulting low-energy or even passive houses.





# PROKONCEPT – THE LOCAL BASED FACTORY

(UAE / GCC)

## INVEST IN THE FUTURE! ENERGY-SAVING BUILDINGS!



GROWING MARKET  
DEMAND

SUSTAINABILITY &  
ENVIRONMENTAL  
BENEFITS

REDUCED COST /  
HIGHER MARGINS

TECHNOLOGICAL  
& PRODUCTION  
EFFICIENCY

VERSATILE  
APPLICATIONS

SUPPORT FOR LOCAL  
ECONOMY

 **The Energy-saving Building System**

**FAST  
RETURN ON  
INVESTMENT\***

Investment with a potential  
payback within

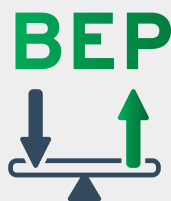
**1.5 YEAR**

\*based on UAE market calculations

PROKONCEPT  
BUILDINGS  
PROVIDE 

**40-50%  
HIGHER  
MARGINS**

compared to some  
traditional buildings:  
the unit cost-to-production  
time ratio is excellent,  
enabling fast, high-volume  
production of quality products  
with minimal waste.



**less than  
1.5 year**  
(4 machines)  
/less than **2.5 years**  
(2 machines)

**EVEN BETTER EFFICIENCY FIGURES WITH 8 MACHINES**



**69%**  
(4 machines);  
**41%** (2 machines)

Product cost  
compared to import

**50%**



Huge cost savings by  
eliminating shipping costs.

**SIGNIFICANT COST  
REDUCTIONS  
FOR DOMESTIC  
TRANSPORTATION:**



as the product is  
easy to load, handle,  
and position.

ORIGINS OF  
MACHINES  
& KNOWHOW



INSULATED CONCRETE FORMS FACTORY SET UP LOCALLY:



**COST  
SAVINGS**



**ENERGY  
EFFICIENCY**



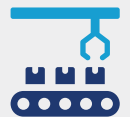
**SUSTAINABILITY  
& ENVIRONMENTAL BENEFITS**



**DURABLE  
CONSTRUCTION MATERIALS**



**NO SPECIAL  
MACHINERY OR  
EXPERTISE IS  
REQUIRED.**



**AUTOMATION  
POTENTIAL:**  
ProKoncept production  
can be highly automated =  
consistent product quality &  
reducing labor cost!

## PRODUCT-SPECIFIC TECHNICAL BENEFITS

- **Cost-effective**, eliminating the need for external insulation and **saving on labor, materials, and time.**
- **Lightweight**, precisely manufactured product with **millimeter accuracy.**
- Superior compatibility and precise dimensions over other building materials.
- **Wide variability** with product families covering all major construction phases, offering a **complete system.**
- Much **faster construction** compared to any other method.
- Quick, error-free fitting **without the need** for bonding agents.
- **Low skill requirements** due to its simple compatibility.
- **Easy transportation** and manual loading/unloading, **no machinery required.**
- **Excellent thermal insulation performance.**
- Significant time and cost savings with **faster, turnkey construction.**